

While You Wait

- How are things going today?
 - Using the scale of duck, write the number in the chat
- Please add your state abbreviation after your name

On a 1-9 rubber duck scale, how are things going today?

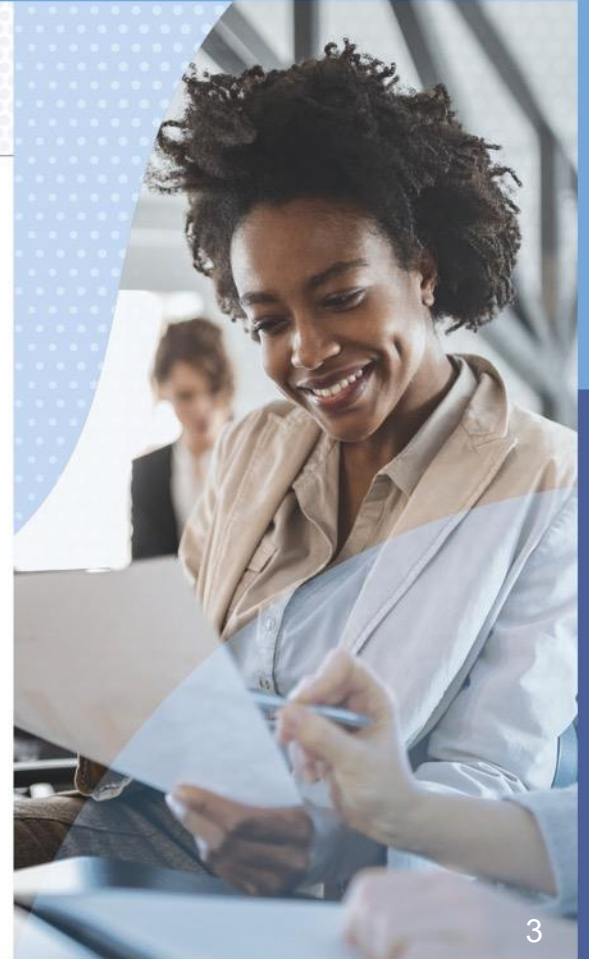


Effective Instruction Collaborative

April 22, 2025

Agenda

- IEP Policy & Practice Workshop
- Specially designed instruction (SDI) supports document from KY
- Let's talk
- Resources and next steps



State IEP Policy & Practice Workshop: Reminder and Updates

- **Where:** Chicago, IL
- **When** (Central Time):
 - June 17 - 9am-4pm
 - June 18 - 9am-12pm
- **Travel Support:** NCSI will cover all travel costs for 3 people per state
- [Learn more and register here](#)

Purpose: Support state teams to analyze and improve their policies and practices for IEP development and implementation—to support schools and districts to prepare for and provide specially designed instruction that increases outcomes for students with disabilities.

KY: SDI Supports document

Specially Designed Instruction (SDI) Supports for Admissions and Release Committee (ARC) Members



SPECIALLY DESIGNED INSTRUCTION (SDI)

*Supports for Admissions and Release
Committee (ARC) Members*



The following is non-regulatory guidance designed to work in conjunction with the procedural safeguard protections for students with disabilities under the Individuals with Disabilities Education Act (IDEA). It is intended to be informal guidance representing the interpretation of the applicable statutory or regulatory requirements in the context of the specific facts presented and is not legally binding.

Revision to guidance is reviewed annually and is based on feedback the Office of Special Education and Early Learning (OSEEL) receives from the directors of Special Education, state shareholder groups, the Kentucky Department of Education's (KDE) interpretation of law, court cases and guidance from the Office of Special Education Programs (OSEP). The OSEEL also revises guidance based on on-site monitoring visits, desk reviews and formal written complaints.



OSEEL

Office of Special Education & Early Learning



Kentucky Department of
EDUCATION



Let's Talk

Let's Talk (Breakout Rooms)

What are your reactions to what KY shared? Consider:

- **Wows:** key takeaways
- **Wonders:** any remaining questions
- **What ifs:** suggestions or thoughts about ways this might be adapted for different purposes or contexts
- **What's next:** action items for you or your state

Designate someone to share highlights from your discussion for at least one of these prompts.

Resources and Next Steps



Resources from the Institute of Education Sciences (IES)

- [Supporting Your Child's Reading at Home](#)
- [Tips for Supporting Reading Skills at Home](#)
- [A Kindergarten Teacher's Guide to Supporting Family Involvement in Foundational Reading Skills](#)

Research to Practice Spotlight Series: Session 6

- Focus: Teacher-Delivered Behavioral Interventions in Grades K-5: Seven Practical Recommendations
- When:
 - Tuesday, May 6, 2025
 - 3:00-4:00pm ET / 12:00pm-1:00pm PT
- Presenters:
 - Kathleen Lynne Lane, PhD., BCBA-D, CF-L2
 - Allison Dymnicki, PhD.
 - Lauren Artzi, PhD., and Kathleen Pfannenstiel, PhD., NCSI

Register



Next Meeting

- Tuesday, May 27
- 11:30-12:30 Eastern
- RI to share SDI guidance!
- Questions or thoughts?
 - Reach out to us at ncsi-ei@wested.org



Quick Survey

- Please take a few minutes to complete this [brief survey](#) so we can better meet your needs.



Thank You

The content of this document was developed by the National Center for Systemic Improvement (NCSI) under a grant from the US Department of Education, #H326R240001. However, those contents do not necessarily represent the policy of the US Department of Education, and you should not assume endorsement by the Federal Government. Project Officer: Julia Martin Eile (October 2024)

WestEd is the lead organization for NCSI. For more information about the work of WestEd, NCSI, and their partners, please visit www.ncsi.wested.org and www.wested.org

