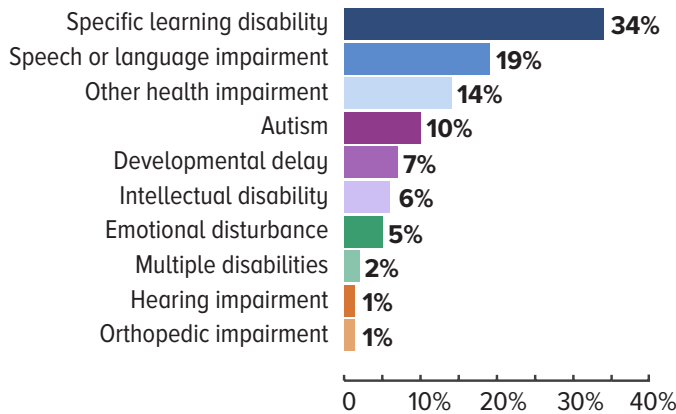


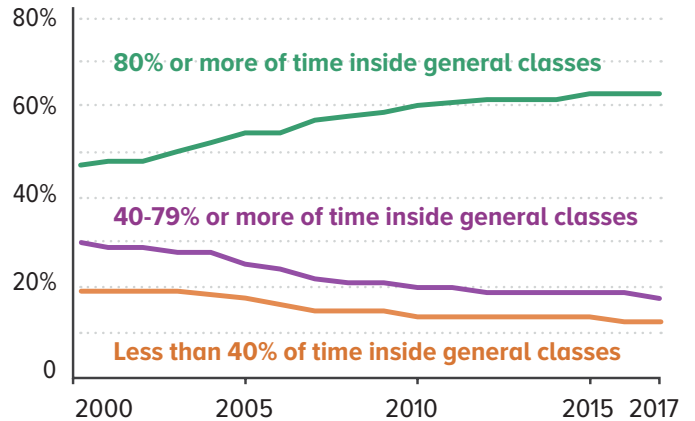
Educational Experiences of Students with Disabilities: A National Snapshot

This resource provides an overview of available data that tell the story of the educational experiences of students with disabilities across the country.

Population of students with disabilities 2017-18 (ages 3–21)¹

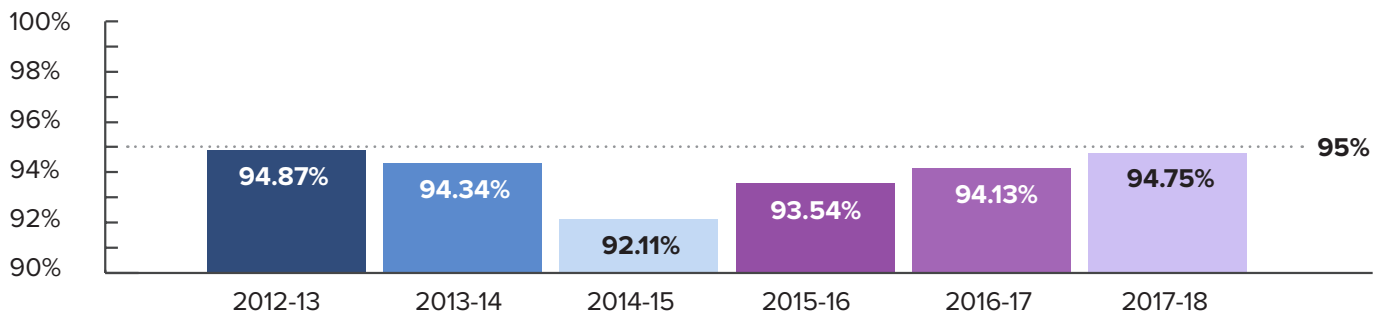


Educational environments of students with disabilities (ages 6–21)²

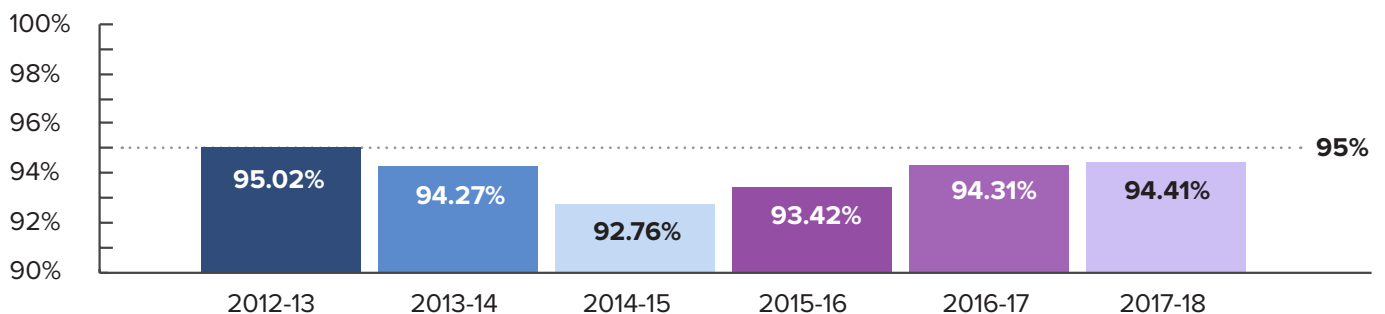


Participation of students with disabilities on statewide assessments³

Statewide assessment participation rates — Reading



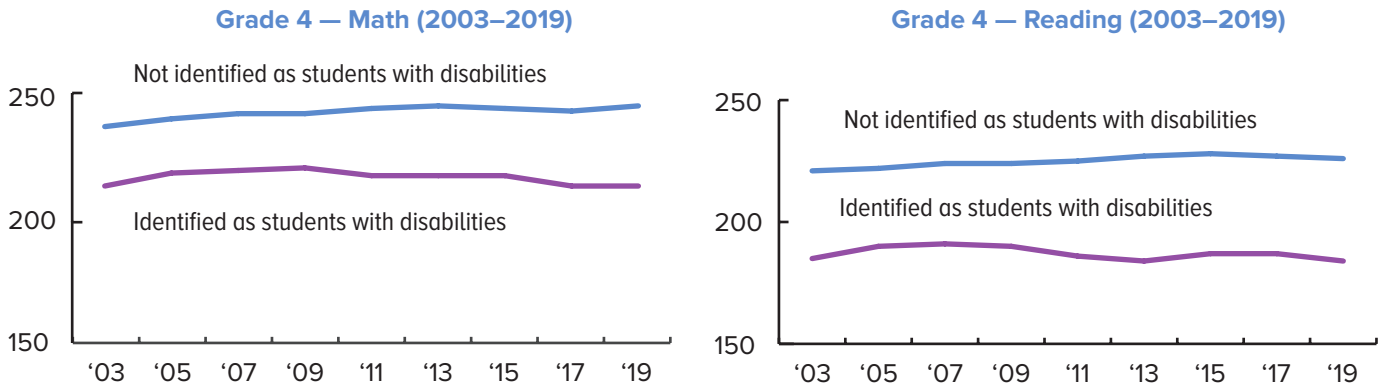
Statewide assessment participation rates — Mathematics



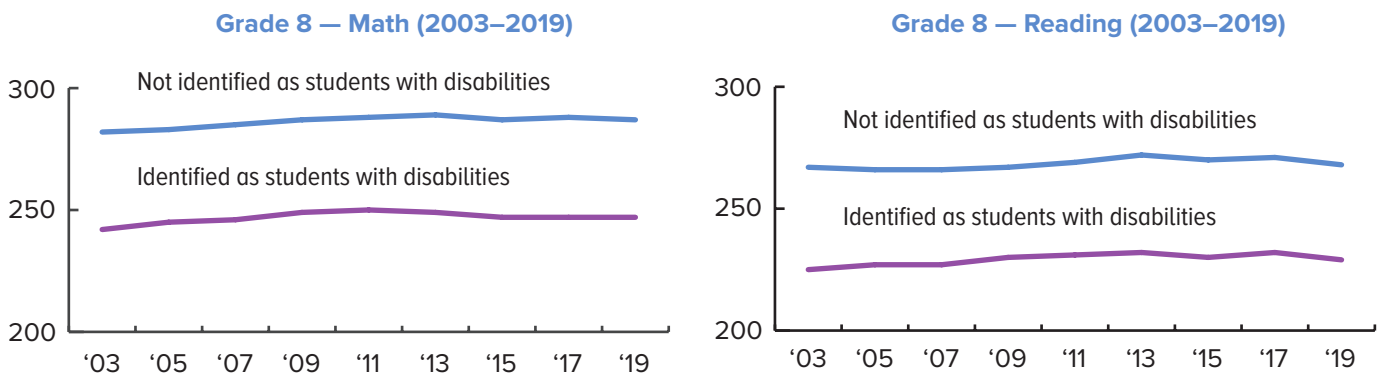
Educational Experiences of Students with Disabilities: A National Snapshot

Performance on National Assessment of Educational Progress⁴

Average scale scores for Grade 4, by disability status of student

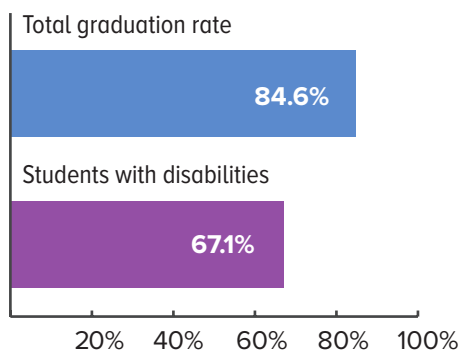


Average scale scores for Grade 8, by disability status of student

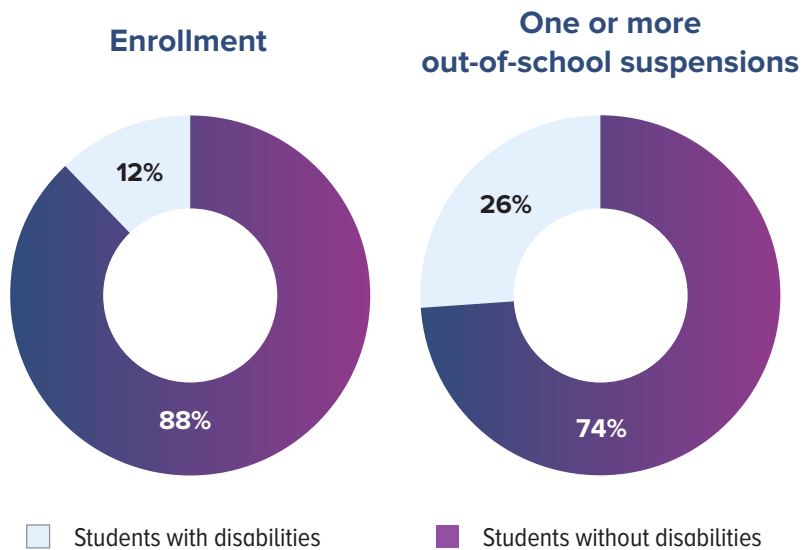


Graduation⁵

Public high school graduation rates (2016–17)



Discipline⁶



Footnotes

- 1** McFarland, J., Hussar, B., Zhang, J., Wang, X., Wang, K., Hein, S., Diliberti, M., Forrest Cataldi, E., Bullock Mann, F., and Barner, A. (2019). *The Condition of Education 2019* (NCES 2019-144). U.S. Department of Education. Washington, DC: National Center for Education Statistics. <https://nces.ed.gov/pubsearch/pubsinfo.asp?pubid=2019144>
- 2** Same
- 3** 2019 Part B FFY 2017 SPP/APR Indicator Analysis
- 4** U.S. Department of Education, Institute of Education Sciences, National Center for Education Statistics, National Assessment of Educational Progress (NAEP), 2003, 2005, 2007, 2009, 2011, 2013, 2015, 2017, and 2019 Mathematics and Reading Assessments
- 5** ED Facts Data Groups 695, School year 2016–17; September 28, 2018; and Alabama State Department of Education website, 2016-2017 Cohort Graduation Rate.
- 6** Civil Rights Data Collection, 2018 School Discipline Report. <https://www2.ed.gov/about/offices/list/ocr/docs/school-climate-and-safety.pdf>